

NOTICE

Note that when converting this document from its original format to a .pdf file, some minor font and format changes may occur causing slight variations. When viewing and printing this document, we cannot guarantee that your specific PC or printer will support all of the fonts or graphics. Therefore, when you view the document fonts may be substituted and your individual printer may not have the capability to print the document correctly.

NEC

Electra **Elite**[®] IPK
and

Electra *Elite*[®]



**SYSTEM ADMINISTRATION TERMINAL (SAT)
END-USER MANUAL**

INT-1028 (IPK)
Document Revision 2C
(Applies to Release 1000
through Release \$4500)

Contents of this manual are subject to change without prior notice at the discretion of **NEC Unified Solutions, Inc.** This document has been prepared for the use of employees and customers of **NEC Unified Solutions, Inc.** and may not be reproduced without prior written approval of **NEC Unified Solutions, Inc.**

D^{term}, Electra Elite and ElectraMail are registered trademarks of NEC America, Inc. Windows is a registered trademark of Microsoft Corporation. AT&T is a registered trademark of AT&T Wireless Services, Inc.

Copyright 2005

NEC Infrontia, Inc.
6535 N. State Highway 161
Irving, TX 75039-2402

Technology Development

TABLE OF CONTENTS

Chapter 1 Introduction

Section 1	General Information	1-1
-----------	---------------------------	-----

Chapter 2 SAT End-User Programming

Section 1	PC Requirements	2-1
Section 2	Features of SAT End-User Programming	2-1
Section 3	Software Installation	2-2
	3.1 Installing Electra Elite IPK/Electra Elite System Administration Terminal (SAT) End-User Software	2-2
Section 4	Using SAT	2-3
Section 5	IP Connection (Configuration)	2-4
	5.1 Configuring SAT to Communicate via LAN/WAN	2-4
Section 6	Wizard	2-10
Section 7	Programming Screens	2-12
Section 8	Toolbar	2-15
Section 9	Electra Elite IPK/Electra Elite Pulldown Menus	2-17

THIS PAGE INTENTIONALLY LEFT BLANK

LIST OF FIGURES

Figure 2-1	Password Screen	2-3
Figure 2-2	Connection Type Screen	2-5
Figure 2-3	Host Setup Screen	2-5
Figure 2-4	IP Connection Setup Screen	2-6
Figure 2-5	Search for Device Screen	2-7
Figure 2-6	Device Search Results Screen	2-7
Figure 2-7	Example of IP Connection Setup	2-8
Figure 2-8	IP Connection Setup	2-8
Figure 2-9	Successful Configuration Screen	2-9
Figure 2-10	Connect Screen	2-9
Figure 2-11	IP Address on Connect Screen	2-10
Figure 2-12	Selecting Wizard for a Feature	2-11
Figure 2-13	Sample Wizard	2-12
Figure 2-14	Electra Elite IPK/Electra Elite System Administration Terminal Software Screen Samples	2-14
Figure 2-15	File Menu	2-17
Figure 2-16	Edit Menu	2-19
Figure 2-17	Basic Menu	2-21
Figure 2-18	User Menu	2-23
Figure 2-19	Communications Menu	2-24
Figure 2-20	Help Menu	2-26

THIS PAGE INTENTIONALLY LEFT BLANK

Introduction

CHAPTER 1

SECTION 1 GENERAL INFORMATION

Congratulations! You have purchased the System Administration Terminal (SAT) End-User program for the Electra Elite IPK/Electra Elite Key Telephone System. The SAT End-User is a user-friendly Windows application that allows the user to program and configure several features of the Electra Elite IPK/Electra Elite KTS from the PC environment.


This application allows the customer to change certain end-user based parameters, such as:

- All Call Page
- Alphanumeric Display
- Attendant Add-on Console
- Automatic Day/Night Switching Time
- Barge-In {Privacy Override}
- Bilingual LCD Indication
- Customized Message
- Delayed Ringing
- Direct Station Selection DSS
- Distinctive Ringing
- Electric Volume Control
- Flexible Line Assignment
- Flexible Ringing Assignment
- Flexible Timeouts
- Full Handsfree Operation
- Handsfree Answerback

- Headset Operation
- Internal Voice/Tone Signaling
- Internal Zone Paging (Meet-Me)
- Music On Hold (MOH)
- Night Transfer
- Off-Hook Ringing
- Ringing Line Preference
- Speed Dial Station
- Speed Dial Stored Characters
- Speed Dial System
- Voice Prompt Selection

It is no longer necessary to call an authorized NEC technician to program these basic system features. Meeting the requirements of a company's day-to-day communications needs just got easier!

Electra Elite IPK/Electra Elite SAT software makes programming the system easy. You simply connect the PC that is running Electra Elite IPK/Electra Elite SAT software to the KTS via a direct or remote connection. Make the programming changes in SAT, upload the changes from SAT and KTS, and then exit.

 SAT End-User is compatible with PCs running Windows 95, 98, ME, XP, 2000 or NT 4.0 (or higher) operating system, and connects to the Electra Elite IPK/Electra Elite KTS either directly (using the serial cable included) or remotely using a modem.

Direct Connection - this method is used when the PC is located at the KTS system. A serial cable connection between the PC and the Electra Elite IPK/Electra Elite KTS is required.

Remote Connection - this method is used, over telephone lines, when the KTS is located at a remote location. A modem in both the PC and the KTS is required.

IP Connection - this method is used over a LAN/WAN network in conjunction with the Elite LAN Programming Device allowing a PC, connected to the LAN/WAN, to remotely program the Electra Elite IPK.

SAT End-User Programming

CHAPTER 2

SECTION 1 PC REQUIREMENTS

This manual provides detailed information for programming using the Electra Elite IPK/Electra Elite System Administration Terminal (SAT) End-User software.

PC requirements:

- Pentium Processor
- Microsoft Windows 95, 98, ME, XP, 2000 or NT 4.0 (or higher) operating system
- At least 13 MB of free hard disk space
- Unused PC serial communication port
- MNP Class 4 or V.42 bis modem (if remote programming is required)

SECTION 2 FEATURES OF SAT END-USER PROGRAMMING

Some of the features of SAT End-User Programming include:

Wizard – allows a user to select a feature using wizard. *Wizard* prompts the user to program the necessary system data items associated with the feature. When *wizard* is selected, a tabbed list of information is provided.

(For a detailed discussion of *wizard*, refer to [Section 6 Wizard on page 2-10.](#))

System Data Upload/Download – allows system data to be transferred from/to a personal computer to provide backup of data.

SECTION 3 SOFTWARE INSTALLATION

3.1 Installing Electra Elite IPK/Electra Elite System Administration Terminal (SAT) End-User Software



Important: Consult your authorized NEC Dealer for proper setup of the KTS for SAT programming.

1. Insert the SAT End-User CD in your CD ROM drive.
2. Click the Windows **Start** button.
3. Select **Run**.
4. Enter **(CD drive letter [i.e. d:]\) \EliteIPKSATEU.exe** and click **OK**.
5. Follow the on-screen instructions of the installation program.
6. To start the SAT End-User program:
 - Click the **Start** button.
 - Select **PROGRAMS**, Electra Elite IPK **EU SAT for End-User**.
 - Click Electra Elite IPK **SAT EU**.
 - Choose the following KTS Type:
 - › **<=S7000**: This is used when system software is S7000 or below.
 - › **S8000**: This is used when system software is S8000 only.
 - › **IPK**: This is used when the system is Electra Elite IPK R1000 or higher.
 - Enter the password. The default password is **PASSWORD** (in upper case letters).



Figure 2-1 Password Screen

SECTION 4 USING SAT

When you first begin SAT End-User, all the buttons and menu items are disabled (grayed out) – except for these menu items:

COMMUNICATIONS/CONNECT/SETUP




Important: To enable the menu items, you must first connect to the KTS using the following procedure:

1. Select **COMMUNICATIONS/SETUP/PC SERIAL PORT**.
2. Choose the PC COM Port that is connected to the KTS. The serial cable provides a direct connection to the KTS, while a modem provides for a remote connection.
3. Set up the **baud rate** and line **settings**.
4. For a **direct connection**, install the serial cable (provided) from the PC serial port selected in Step 2, to COM1 on the KTS.

For a **modem connection**, when the KTS is at a remote location, connect a modem to the SAT PC. See your authorized NEC Dealer for configuration of the KTS for modem connection.

For **IP connection**, use the Elite LAN Programming Device connected to the KSU. See your authorized NEC Dealer for installation of the Elite LAN PC Programming device.

5. Select **COMMUNICATIONS/CONNECT**, and choose either **DIRECT, MODEM** or **IP CONNECTION**.
 -  Refer to [Section 5 IP Connection \(Configuration\)](#) for the procedures for setting up the SAT End-User program when IP connection is selected.
6. Enter a password if the KTS requires one. See your authorized NEC Dealer for password information.
7. Click the **CONNECT** or **DIAL** button, depending on the type of connection.
8. Once a connection is established, Electra Elite IPK SAT EU will automatically perform a complete download of all system data from the KTS to the PC.
9. When downloading is completed, all the menu items and buttons are enabled. Begin programming the features using the various menu items in SAT.
10. Complete programming. Select **COMMUNICATIONS/UPLOAD** and press the **Start** button to upload all of the changes and programming to the KTS.



SAT End-User cannot save any data to the PC hard disk. When closing Electra Elite IPK SAT EU, all programming and changes are cleared from the PC.

SECTION 5 IP CONNECTION (CONFIGURATION)

When the IP connection is used, the Elite LAN PC Programming Device must be installed.

5.1 Configuring SAT to Communicate via LAN/WAN

1. With SAT already open click: **COMMUNICATION/CONNECT**. The Connection Type screen appears.

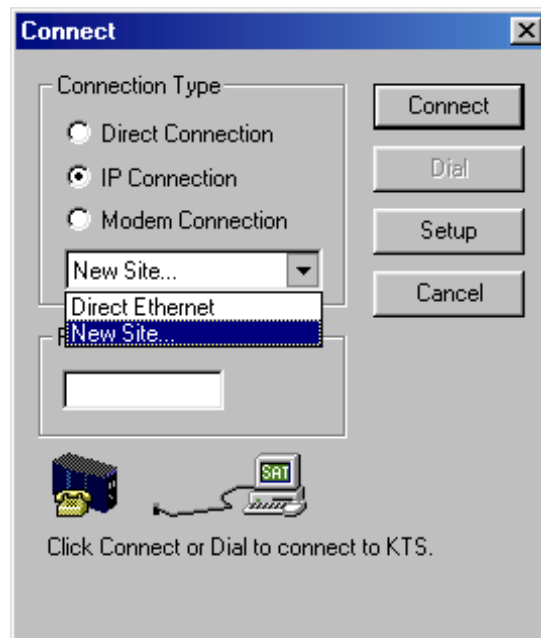


Figure 2-2 Connection Type Screen

2. Ensure that the IP Connection is selected.
3. From the drop down list chose from the two available options:
 - Direct Ethernet**
 - When the Direct Ethernet is selected, click the **Setup** button. The Host Setup Screen will appear.
 - This screen allows the IP Address and TCP Port of an already installed device to be assigned.

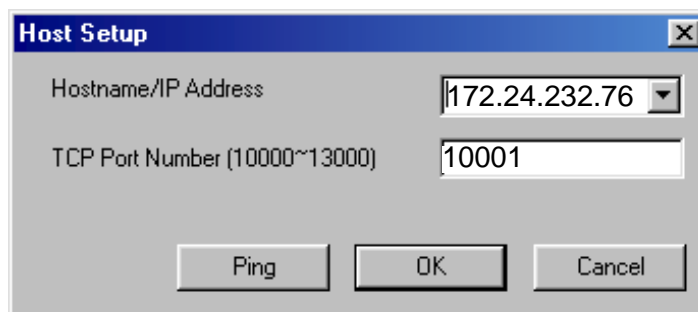



Figure 2-3 Host Setup Screen

- **Hostname/IP Address:** type the IP Address of the Elite LAN PC Programming Device to contacted.

- **TCP Port Number:** type in the assigned TCP port that has been assigned to the device.

 If the device has been contacted previously, the IP Address will be displayed in the drop down list under Hostname/IP Address and the TCP port number will be saved with the IP Address.

□ **New Site**

When the New Site option is selected, click the **Setup** button. The IP Connection Screen will appear. This screen allows the user to Search/Configure/Update/Ping, and Restore an Elite LAN PC Programming Device to factory defaults.

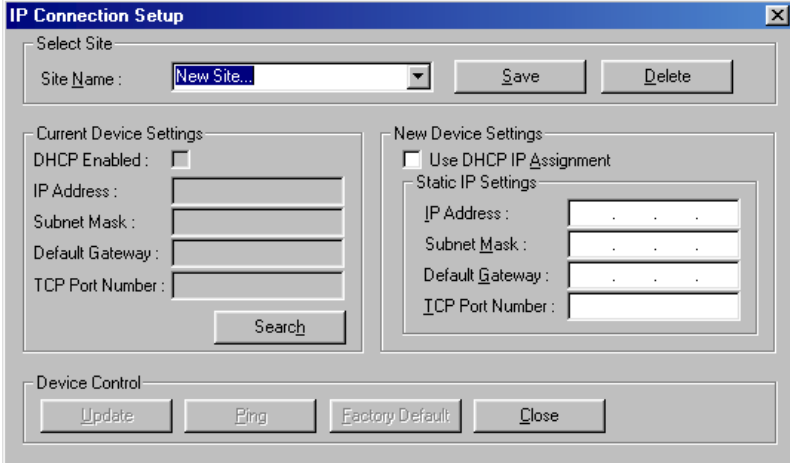


Figure 2-4 IP Connection Setup Screen

- **Select Site:** This allows the user to create a profile for each device that can be connected to, or to Delete a profile.
- **Current Device Setting:** This shows the current device's IP Address, Subnet Mask, Default Gateway, and TCP Port Number. If a New Site is selected in the Select Site drop down list, the Search option can be used to search the Network for Elite LAN PC Programming Devices in the following Subnets: Class C and Class B. Once the Search Button is chosen the following screen will appear.

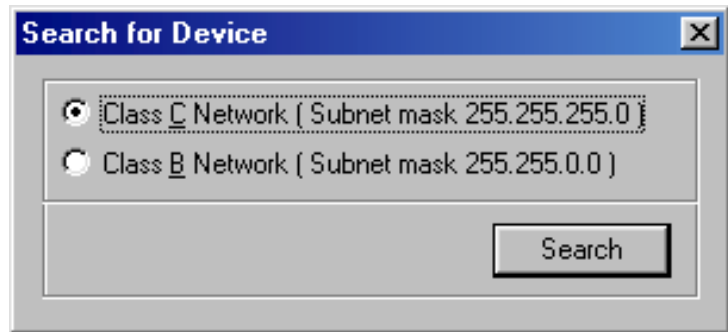


Figure 2-5 Search for Device Screen

Select the appropriate Subnet that the PC and the Elite LAN PC Programming Device is located in, and click **Search**.

Once a device is found, the Device Search Results screen shows the available device(s) to be configured. If no devices are found, a message will be displayed stating that no devices were found.

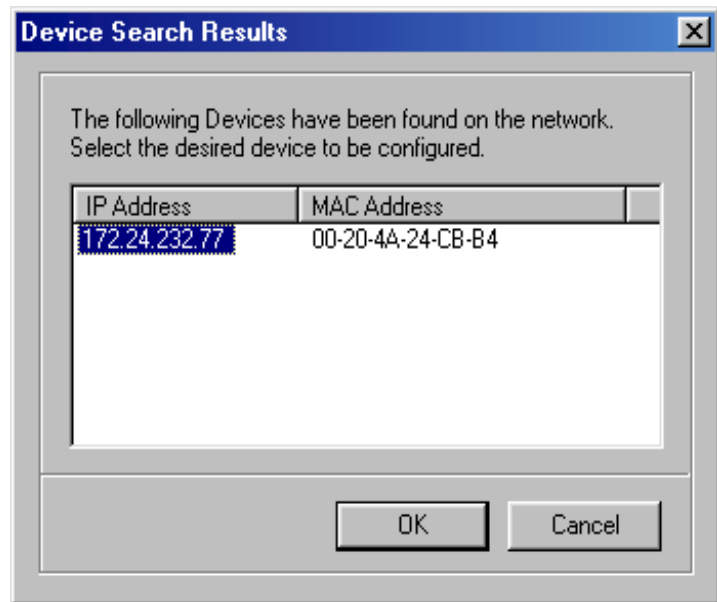


Figure 2-6 Device Search Results Screen

- Select the device and click **OK**.

The IP Connection Setup Screen will open with the current Device Settings.

The screenshot shows the 'IP Connection Setup' dialog box. At the top, there is a 'Select Site' section with a 'Site Name' dropdown menu set to 'New Site...' and 'Save' and 'Delete' buttons. Below this are two main sections: 'Current Device Settings' and 'New Device Settings'. The 'Current Device Settings' section includes checkboxes for 'DHCP Enabled' (checked), and input fields for 'IP Address' (172.24.232.77), 'Subnet Mask' (255.255.255.255), 'Default Gateway' (0.0.0.0), and 'TCP Port Number' (10001), with a 'Search' button below. The 'New Device Settings' section has a checked 'Use DHCP IP Assignment' checkbox and a note: 'Note: If the DHCP server allocates a new IP address for the Ethernet Device on a periodic basis, it is recommended to use Static IP address (or a Static Mapping in the DHCP server allocation tables)'. Below the note is an input field for 'TCP Port Number' (10001). At the bottom, the 'Device Control' section contains 'Update', 'Ping', 'Factory Default', and 'Close' buttons.

Figure 2-7 Example of IP Connection Setup

- Once the Elite LAN PC Programming Device is located configuration can be performed.

This screenshot shows the 'IP Connection Setup' dialog box with 'New Device Settings' selected. The 'Current Device Settings' section is disabled, with 'DHCP Enabled' unchecked and empty input fields for IP Address, Subnet Mask, Default Gateway, and TCP Port Number. The 'New Device Settings' section has 'Use DHCP IP Assignment' unchecked. Below it, the 'Static IP Settings' section is active, showing input fields for 'IP Address', 'Subnet Mask', 'Default Gateway', and 'TCP Port Number'. The 'Device Control' section at the bottom remains the same with 'Update', 'Ping', 'Factory Default', and 'Close' buttons.

Figure 2-8 IP Connection Setup

- Using the New Device Settings: the following items can be configured: DHCP Yes or No, IP Address / Subnet Mask / Default Gateway / TCP Port Number.
 - ✎ If DHCP Service is selected a static IP Address can not be assigned. When the Use DHCP IP Assignment is unchecked then the IP Address / Subnet Mask / Default Gateway options will be allowed.

- Once the appropriate selections have been made, click the Update button to update the Elite LAN PC Programming Device with the new settings.
 - ✎ The Ping option can be used to verify that the device is able to be reached, the Factory Default button is used to restore the unit back to default settings.

Once the configuration has been accepted, a confirmation letting you know that the device was configured successfully appears.

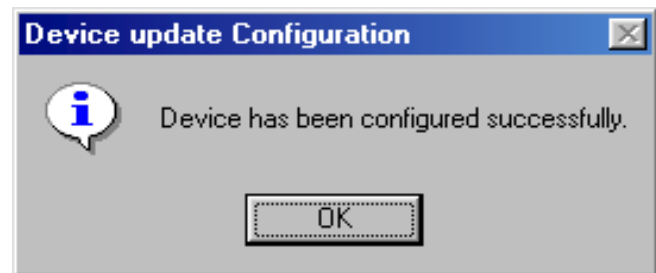


Figure 2-9 Successful Configuration Screen

- Click the **OK** button, and then close the **IP Connection Setup** window.
- Now you are ready to connect to the Elite IPK System by using the Connect Screen.

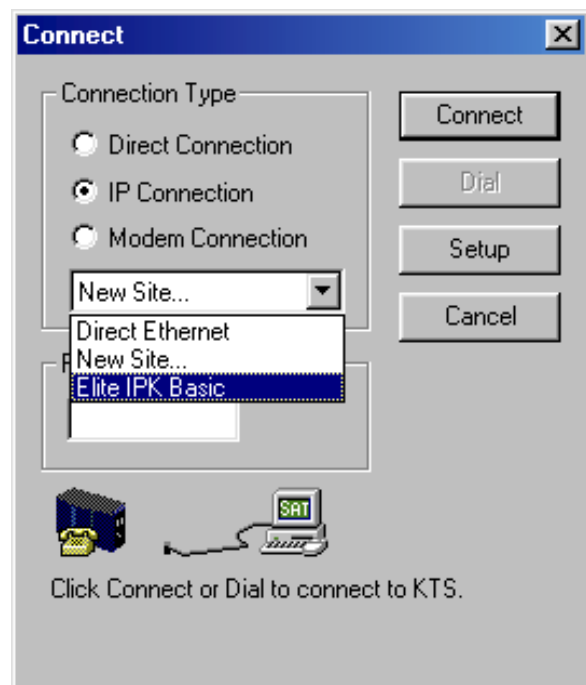


Figure 2-10 Connect Screen

- In the drop down list, choose the site that was previously created and click the **Connect** button.

The following information will be displayed to indicate the system's IP address. Refer to [Figure 2-11 IP Address on Connect Screen](#).

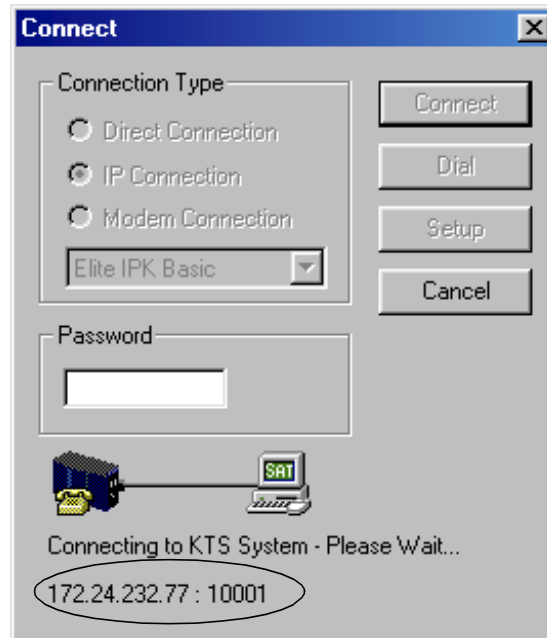


Figure 2-11 IP Address on Connect Screen

- Once connection is established, proceed with Uploading or Downloading the system data.

SECTION 6 WIZARD

The *wizard* organizes system data assignments for programming individual features. When the user selects *wizard*, the system provides a tabbed list of information related to the selected feature.

Wizard can be accessed by using the wizard button from the toolbar or by selecting **Wizard** from the File pulldown menu.



Select from the toolbar.

When *wizard* is displayed, the user can select any feature from the list or can begin entering letters of the feature name. As the name is being entered, Quick Search finds the matching letters and highlights the match.

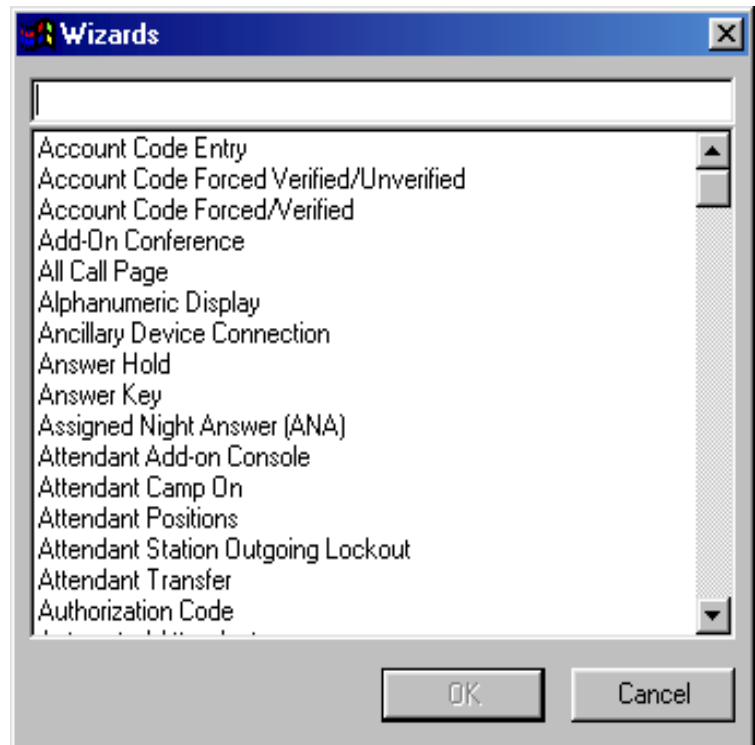


Figure 2-12 Selecting Wizard for a Feature

When a feature is selected, all system related data items for that feature are presented in sequence. Enter the required values in the current tab and click next to advance to the next tab. Click back to go to previous tab. In [Figure 2-13 Sample Wizard on page 2-12](#). The Flexible Line Assignment feature is selected.

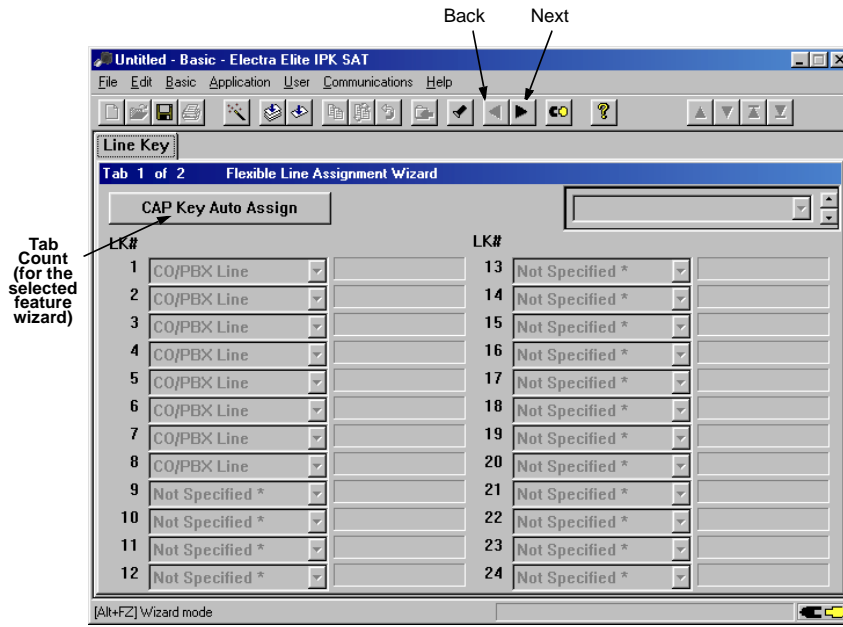


Figure 2-13 Sample Wizard

SECTION 7 PROGRAMMING SCREENS

Main Menu

When the SAT software program is launched, the first screen that is displayed is the Main Menu screen. This screen allows the user to access the options used to program the Electra Elite IPK/Electra Elite system. [Figure 2-14 Electra Elite IPK/ Electra Elite System Administration Terminal Software Screen Samples](#) shows the menu and describes the layout.

Pulldown Menu

Pulldown menus are available for each function involved in programming the Electra Elite IPK/Electra Elite system. To access the data associated with the function, click on the function name on the Main Menu. Some of the options on the initial pulldown menu offer several selections. An arrow to the right of the option name indicates

additional selections are available. Refer to [Figure 2-14 Electra Elite IPK/Electra Elite System Administration Terminal Software Screen Samples](#) for an example of a Pulldown Menu.

System Data Screen

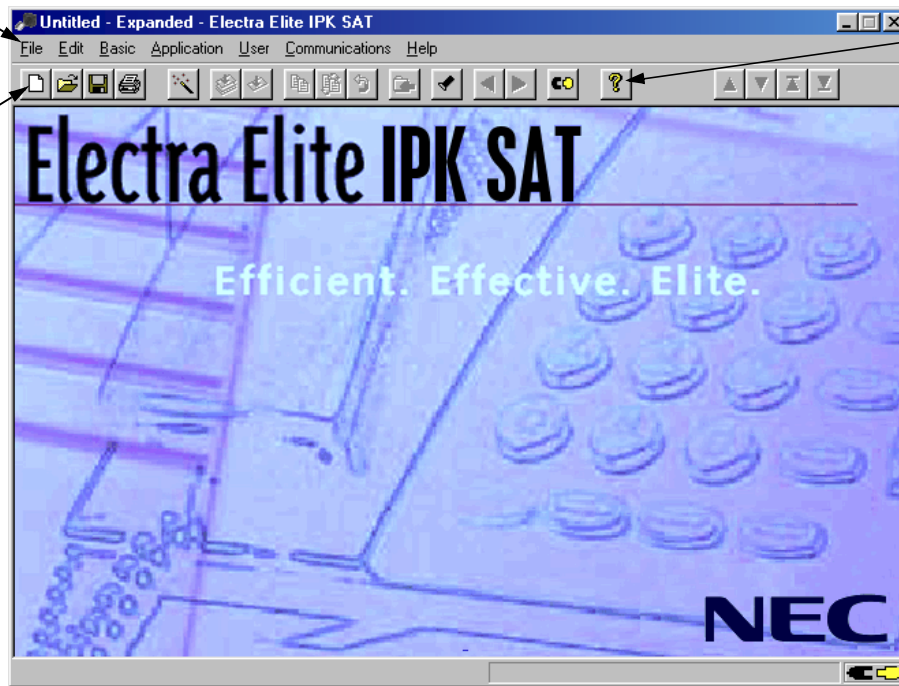
When an option is selected from a pulldown menu, a screen is displayed that allows the user to program data for the function selected. [Figure 2-14 Electra Elite IPK/Electra Elite System Administration Terminal Software Screen Samples](#) shows an example of a System Data Screen. This screen indicates three tabs. The tabs indicate system data items that are grouped together for programming. The active tab group is indicated by a box around the tab title. To access another tab group, press the tab or use the keyboard shortcut. Keyboard shortcuts are displayed at the bottom of the screen in the Information Bar.

Main Menu

Pulldown Menus

Toolbar

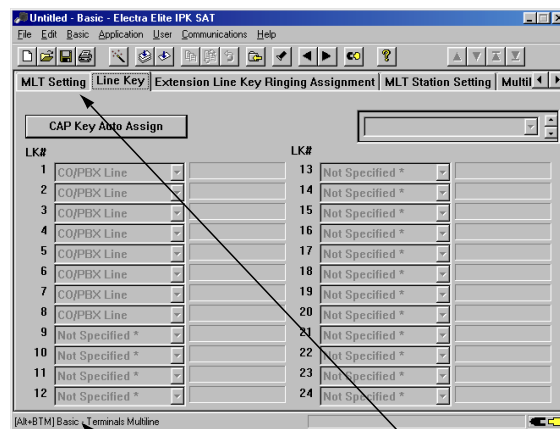
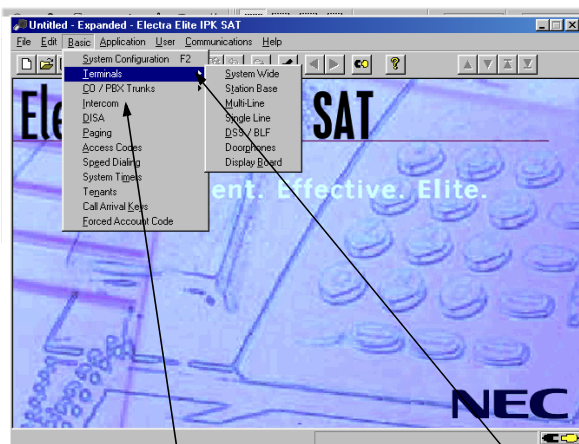
Help
Accesses help
information.



Connection Status
Indicates whether the data
path is connected to the
Electra Elite IPK/Electra
Elite system.

Pulldown Menu

System Data Item
Screen



Pulldown Menu
Make selections by clicking on an
item. The associated screen is
displayed.

The arrow indicates additional
information is available for this
option.

Information Bar
Indicates
Keyboard
Shortcut.

Tab Groups
The active Tab Group is indicated
by the darkened box surrounding
the tab name.

Figure 2-14 Electra Elite IPK/Electra Elite System Administration Terminal Software Screen Samples

SECTION 8 TOOLBAR

Several icons are provided to allow the user to navigate the program. The icons in the toolbar are explained in this section. The availability of the individual tools depends on the activity the user is performing. When the icon appears shadowed, the tool is not available. When the icon is dark, the tool is available. Refer to [Figure 2-14 Electra Elite IPK/Electra Elite System Administration Terminal Software Screen Samples](#) for an example.



Accesses the Job Specifications printing option.



Accesses the *wizard* for individual features. The F10 special function key provides a shortcut to this wizard.



Sets the defaults for **all** items on the open tab.



Sets the defaults for the individual system data items (on the screen the default is set for the item where the cursor is blinking).



Allows data items to be copied between ports. The F3 special function key provides a shortcut to this feature.



Allows values between two ports to be swapped. The F5 special function key provides a shortcut to this feature.



Allows the user to undo the current edits and return to the previous editing operation.



Allows the user to return to the previous editing operation. The F11 special function key provides a shortcut to this feature.



Accesses Quick Search. Quick Search provides a detailed list of system data items. The F8 special function key provides a shortcut to this feature.



Returns to the previous tab group. The Shift + F6 special function key provides a shortcut to this feature.



Advances to the next tab group. The F6 special function key provides a shortcut to this feature.



Displays the help contents for the Electra Elite IPK SAT End-User software program. The F1 special function key provides a shortcut to this feature.



Scrolls up displaying the previous page.



Scrolls down displaying the next page.



Advances to the first page.



Advances to the last page.



Brings up the Connection dialog box. The F7 special function key provides a shortcut to this feature.

SECTION 9 ELECTRA ELITE IPK/ELECTRA ELITE PULLDOWN MENUS

This section explains each of the pulldown menus that are available in SAT software.

File

The File pulldown menu provides options for basic file management.

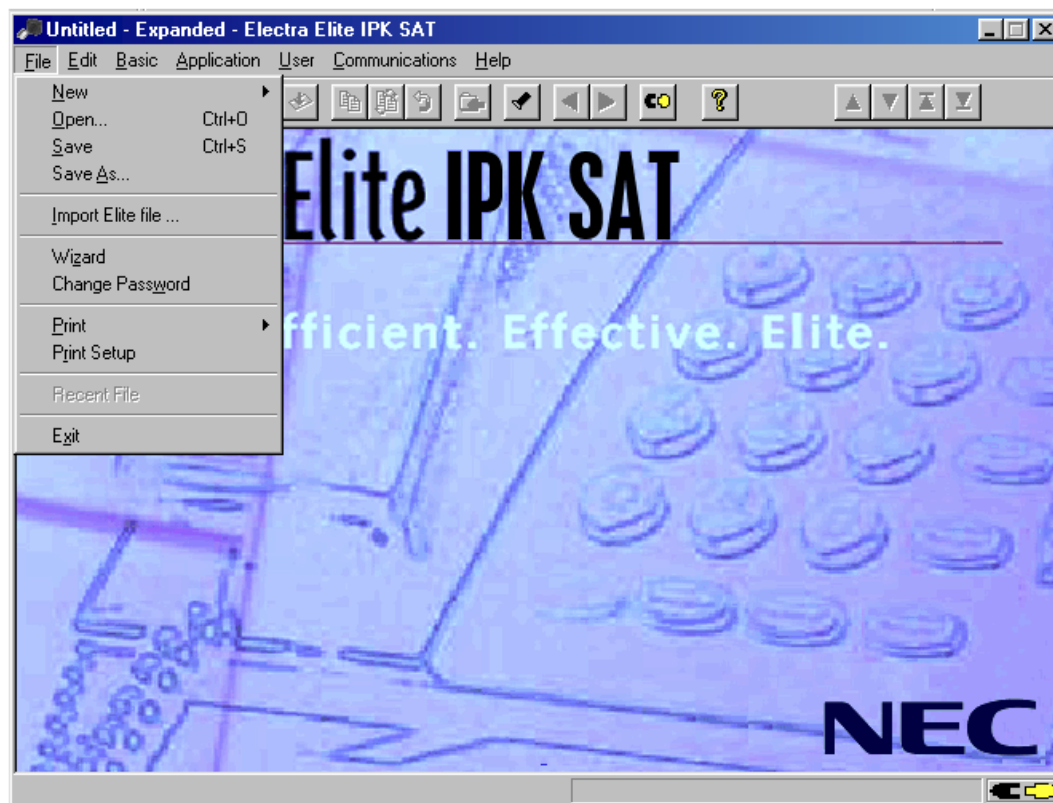


Figure 2-15 File Menu

Wizard

Accesses the Wizard. Wizard is available for every feature offered in the Electra Elite IPK/Electra Elite system. Wizard provides all of the information necessary to program a feature. All of the system data items necessary for programming the feature are grouped together. The user can press the appropriate tabs to access system data and make the necessary changes.

Change Password

Allows the user to change the SAT password.

Print

Provides two print options: Job Specifications and Designation Labels (requires a standard inkjet or laser printer).

When Job Specifications is selected, a menu is displayed. There are three options for printing the Job Specifications: printing a family (group) such as system-wide, trunk group, or tenant, printing a range of Memory Blocks, or printing an individual Memory Block.

Designation Labels

Electra Elite IPK SAT End-User version does not support exporting data to the DESI Label printing software. This menu item is disabled. However, if you chose to install DESI during SAT installation, you can still run DESI separately by clicking the Windows START button, and then selecting:

PROGRAMS/DESI for Windows/DESI

Print Setup

Allows access to the printer setup screen. This allows the printer configuration to be modified.

Exit

Exits the programming software. If changes were made, the technician is prompted to upload the changes before the program shuts down.

Edit

The Edit pulldown menu allows files to be edited, swapped, defaulted, or copied.

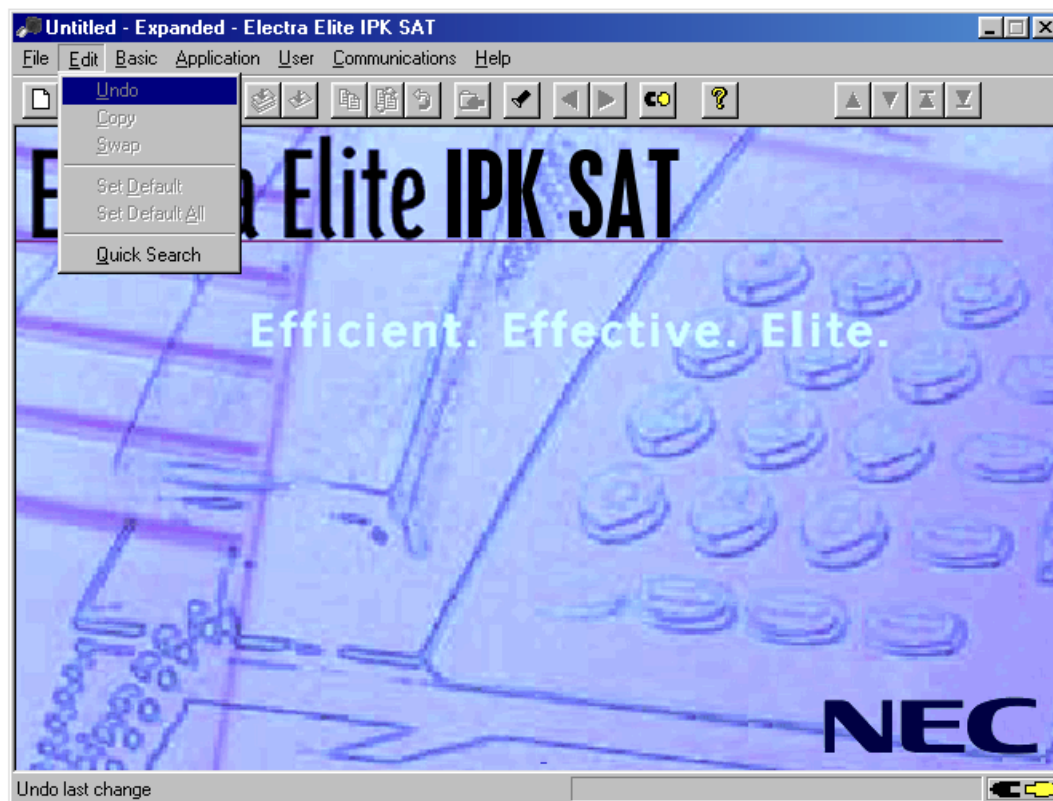


Figure 2-16 Edit Menu

Undo

Allows the user to undo current edits and return to the previous editing operation.

Copy

Brings up the copy screen. This allows port information to be copied from one port to another.

Swap

Allows values *between* two ports to be swapped.

Set Default

Defaults to the current field where the cursor is positioned.

Set Default All

Allows the user to set all values to default on the open tab.

Quick Search

Allows the user to search the Memory Blocks by Memory Block Number, Memory Block Name, or Tab Name. After the search method is specified, a list is provided. The user can scroll through the list and click on the desired Memory Block. System data can then be modified as necessary.

Basic

The Basic pulldown menu allows access to basic end-user programming items.

- Some menu items may be disabled if the appropriate hardware is not assigned, or a dependent data item is not set.

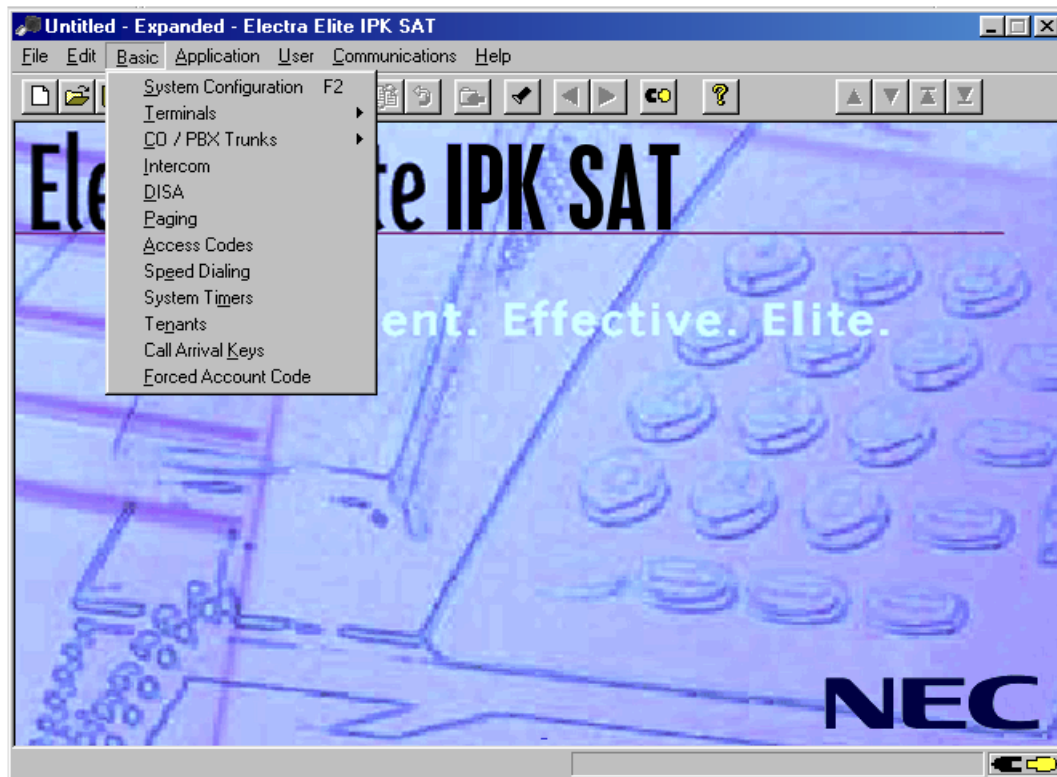


Figure 2-17 Basic Menu

Terminals

This option allows the user to assign terminal related assignments to the system. Several selections are available with this option.

- System Wide
- Station Base
- Multiline
- DSS/BLF

CO/PBX Trunks

This option allows user to program system data related to trunk assignments.

One selection is available with the System-Wide option.

Intercom

This option allows the technician to program system data related to intercom assignments.

Speed Dialing

This option allows data related to system and station speed dialing to be programmed.

System Timers

This option allows the user to change the Call Forward – Busy/No Answer and CO/PBX incoming Ringing Alarm tone.

Forced Account Codes

This option allows the user to assign account codes.

User

The User pulldown menu allows access to system data items related to speed dialing.

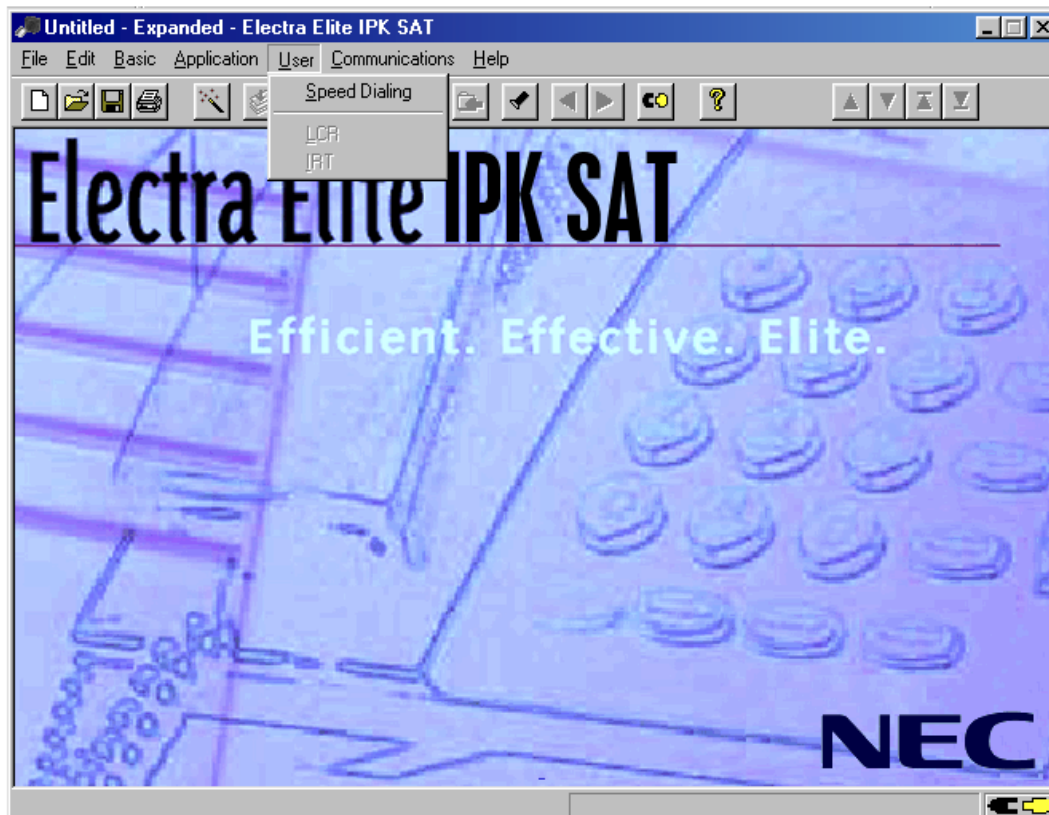


Figure 2-18 User Menu

Speed Dialing

This option allows the user to program both System and Station Speed Dial memory locations. Each Multiline Terminal in the Electra Elite IPK/Electra Elite can be assigned individual speed dial numbers.

- ✎ Station Speed Dial can be denied in System Programming. If no Station Speed Dial memory locations are available, consult your authorized NEC Dealer.

Communications

The Communications pulldown menu allows access to system data items relating to direct and remote connections to the Electra Elite IPK/Electra Elite system.

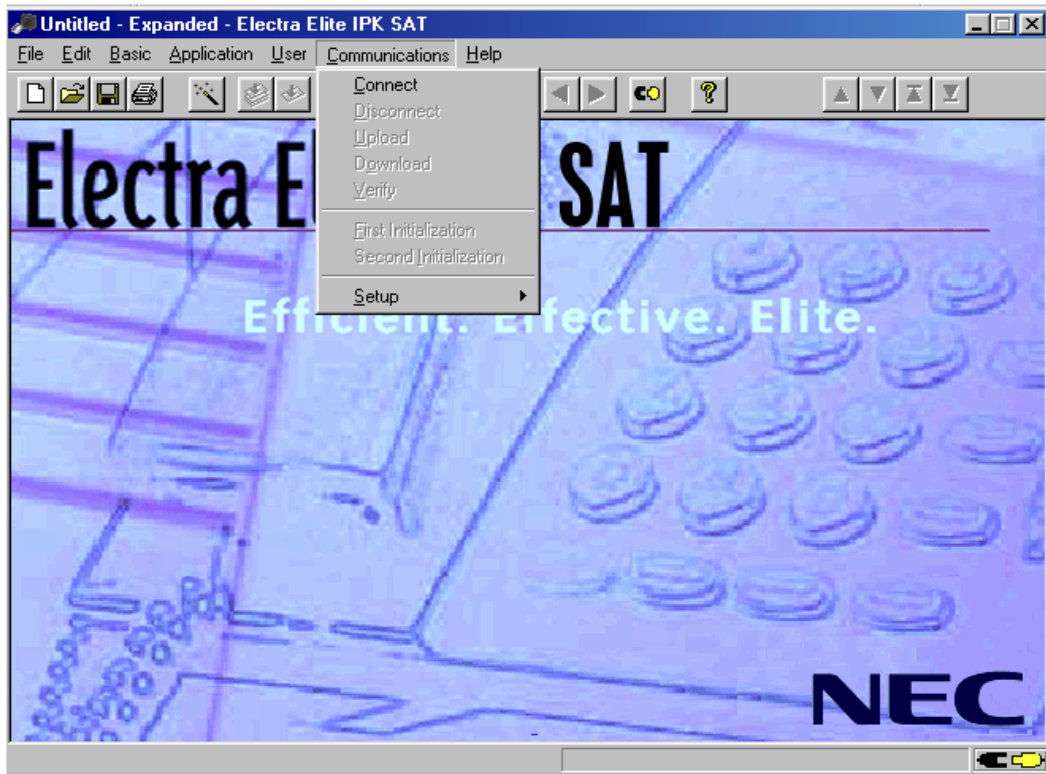


Figure 2-19 Communications Menu

Connect

This option allows the user to connect to the Electra Elite IPK/Electra Elite system.

Disconnect

This option allows the user to disconnect from the Electra Elite IPK/Electra Elite system.

Upload

This option allows the user to upload programming changes and configurations to the KTS.

Download

This option allows the user to download the current Electra Elite IPK/Electra Elite configuration.

Verify

This option allows the user to compare the configuration programmed in the KTS with that of the PC.

Setup

This option allows the user to set up the PC serial port. This is the serial port connected to the KTS.

Help

The Help pulldown menu allows access to online help.

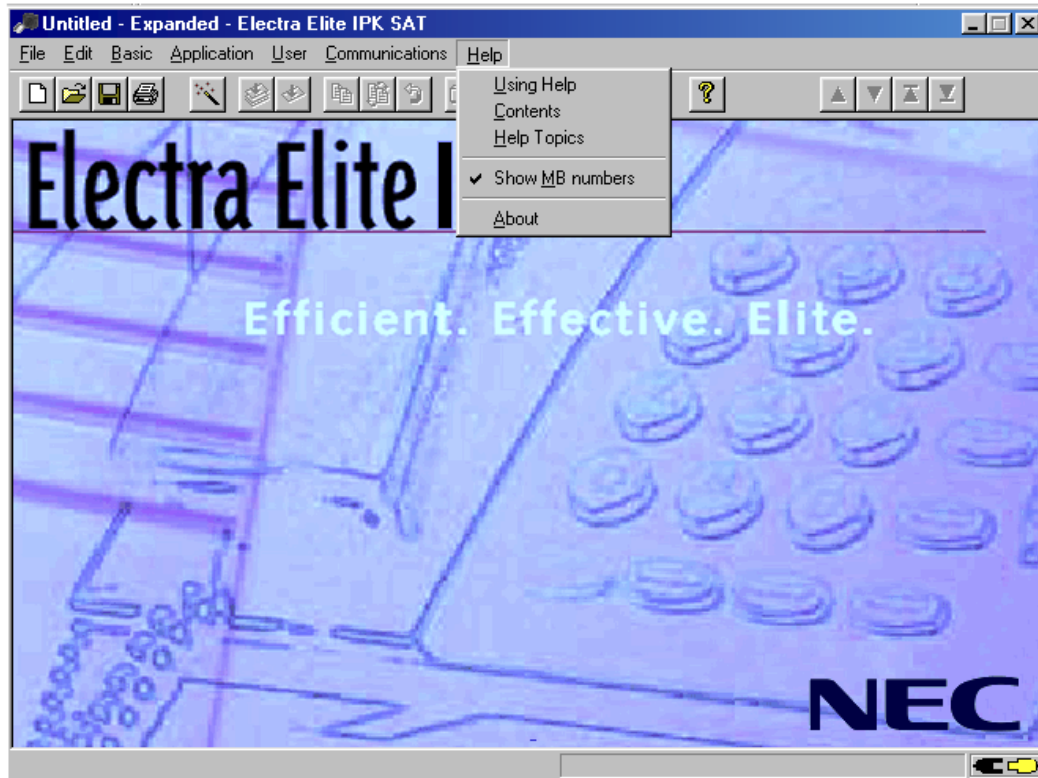


Figure 2-20 Help Menu

Using Help

This option provides access to the help topics window that describes how to use the help function.

Contents

This option provides access to the help topics that are available for the Electra Elite IPK/Electra Elite System Administration Terminal system.

Help Topics

This options provides a list of help topics. The user can bookmark topics that they may want to refer to again.

Show MB Numbers

When enabling this option, the memory block number is displayed above the cursor, when positioning the cursor over a data field.

About

This option provides information about the System Administration Terminal (SAT) End-User software.

THIS PAGE INTENTIONALLY LEFT BLANK

NEC

Electra **Elite** IPK
and

Electra *Elite*[®]

**SYSTEM ADMINISTRATION TERMINAL (SAT)
END-USER MANUAL**

NEC Unified Solutions, Inc.

Document Revision 2C

(Applies to Release R1000 through
Release R4500)

